

WELCOME TO BERKELEY, CLASS OF 2025 + more!!!

# PNM HANDBOOK

Fall Primary Recruitment 2021



# WELCOME!



Our number one priority is to provide you a safe, enjoyable recruitment experience. Please read through this handbook in order to better understand what Recruitment at Cal entails, and don't hesitate to reach out. We are here for you as a resource as you navigate this process!



# COMMITMENT TO DIVERSITY, EQUITY, AND INCLUSION

We are SO excited to welcome you to our community as you are finding your new home. As a Panhellenic body, we are committed to providing you an enriching experience in which you can truly find a group of inspiring women, and your new home. We have learned a tremendous amount this past year, and are excited to continue growing and learning in order to make this an experience for whomever is interested. Sorority Recruitment can be a daunting and tiresome experience, and thus we are constantly implementing new strategies to lessen the burden that this experience can have on you. We invite you to communicate to us any concerns, and look forward to new minds joining our community and developing innovative practices.

We vow to make this experience more accessible, enjoyable, and efficient.

Sincerely,

Alexandria Marx, Vice President of Membership

Caroline Dority, Head Recruitment Counselor

Sneha Ramesh, President

Jeff Woods, Panhellenic & LEAD Center Advisor



# TABLE OF CONTENTS...1



What is Panhellenic?	...1
What is Fall Primary Recruitment?	...2
Why Should I register?	...3
Recruitment Terms (1)	...4
Recruitment Terms (2)	...5
CalGreek's Core Values (1)	...6
CalGreek's Core Values (2)	...7
Leadership & Service	...8
Scholarship & Friendship	...9
PNM's Rights	..10
PNM Code of Conduct	..11
Schedule of Recruitment	..12
Breakdown of Each day of Recruitment	..13
Recruitment Tips + Things to Know (1)	..14
Recruitment Tips + Things to Know (2)	..15
MRABA	..16
Recruitment FAQs	..17



# TABLE OF CONTENTS...2



Financial Information	..18
Financial Information (Summary)	..19
Chapter Specific Dues (1)	..20
Chapter Specific Dues (2)	..21
Letters of Recommendation (1)	..22
Letters of Recommendation (2)	..23
Live-In Requirements	..24
Scholarship Information	..25
Finding a Balance	..26
How to Pronounce Greek letters (1)	..27
How to Pronounce Greek letters (2)	..28
Individual Chapter Summary	..29
Other Councils	..30
Contact Information	..31

'Panhellenic' is defined in 2 ways.

### 1. National Panhellenic Conference (NPC) definition

NPC is the national umbrella organization to which 26 women's organization (sororities) belong). There are 12 NPC chapters at Berkeley. NPC is the entity through which Panhellenic sororities make unanimous decisions related to processes, procedures, and action.

### 2. 'Panhellenic' council / community

At Berkeley, you will typically hear Panhellenic as the term used to refer to the 13 chapters that participate in Philanthropy, educational, and other program initiatives. We are 1 of 4 social Greek communities at Cal, and are comprised of ~2,000 members. There are a total of 14 chapters in Panhellenic, 13 of which participate in Recruitment. The Panhellenic Council oversees these 13 chapters, and is comprised of 13 council members.

# WHAT IS PANHELLENIC?



# WHAT IS FALL PRIMARY RECRUITMENT?

Fall Primary Recruitment (FPR) is the process by which potential new members (you!) can join a Panhellenic sorority.

It is the only recruitment period in which potential new members visit 13 of the Panhellenic chapters at UC Berkeley in search of a chapter that best aligns with their interest and values. It is a fully structured, multi-day process rooted in mutual selection.

## WHAT DOES MUTUAL SELECTION MEAN AND HOW DOES IT WORK?

During FPR you will start by visiting all 13 participating chapters.

At the end of each day, you will meet with your Recruitment Counselor and rank the chapters that you visited in order of your desire to visit them the following day. The chapters, in a similar fashion, decide which Potential New Members, they would like to return the next day. The chapters are limited on the number of women who they can invite back each round, just as you are limited in the number of chapters you can return to each day.



# SUMMARY: WHY SHOULD I REGISTER FOR RECRUITMENT?

- Recruitment is a low-stakes way to meet new people and make new friends!
- Berkeley Greek Life is a great way to learn about opportunities on campus, find a community at a big school
- Housing & Dining accommodations (check out the website for more information, coming soon!)
- Registration is FREE this year (and may not be next year!)
- and MORE! Keep reading and follow us on social media to continue learning about our community and what opportunities it provides :)



@CALPHC



UC BERKELEY  
PANHELLENIC



BELLA VILLEGAS -  
PHC VP OF  
COMMUNICATIONS

# RECRUITMENT TERMS .....1

**POTENTIAL NEW MEMBER (PNM):** any women interested in becoming a member who is matriculated and eligible according to the Panhellenic recruitment requirements

**RECRUITMENT COUNSELOR (RC):** a Panhellenic representative who has no contact with their own chapter during membership recruitment and whose purpose is to guide women through the recruitment process and answer questions.

**ACTIVE MEMBER:** a member who has been initiated into a sorority and participates in chapter activities at the collegiate level.

**ICS:** "Interactive Collegiate Solutions." Recruitment software used for registration, chapter selections, and constructing individual schedules throughout recruitment.

**'PARTY':** an event at a sorority chapter on any day of recruitment

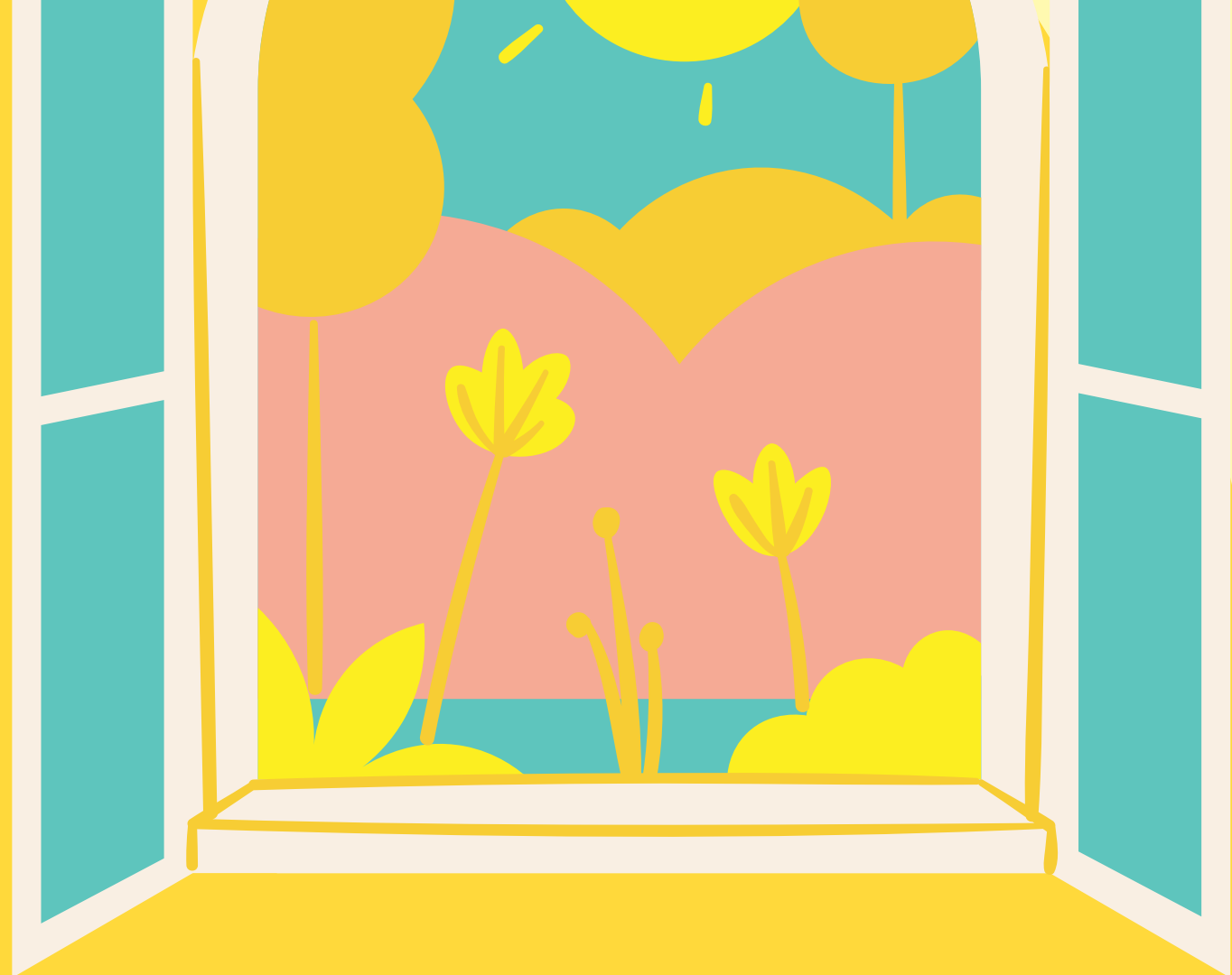


# RECRUITMENT TERMS .....2

BID:	an invitation to join a sorority or fraternity
CHAPTER:	a campus-based organization of a national or international sorority or fraternity.
INITIATION:	a ceremony during which new members become active members, receiving lifelong membership privileges.
LEGACY:	someone whose mother or sister is a member of a particular Greek-letter organization. Definition of legacy differs among chapters, so please check with individual definitions.
NEW MEMBER:	an individual who has accepted a bid but is not yet an initiated member.
SISTER:	a term used by sorority members in the same chapter to refer to one another







# CALGREEKS CORE VALUES

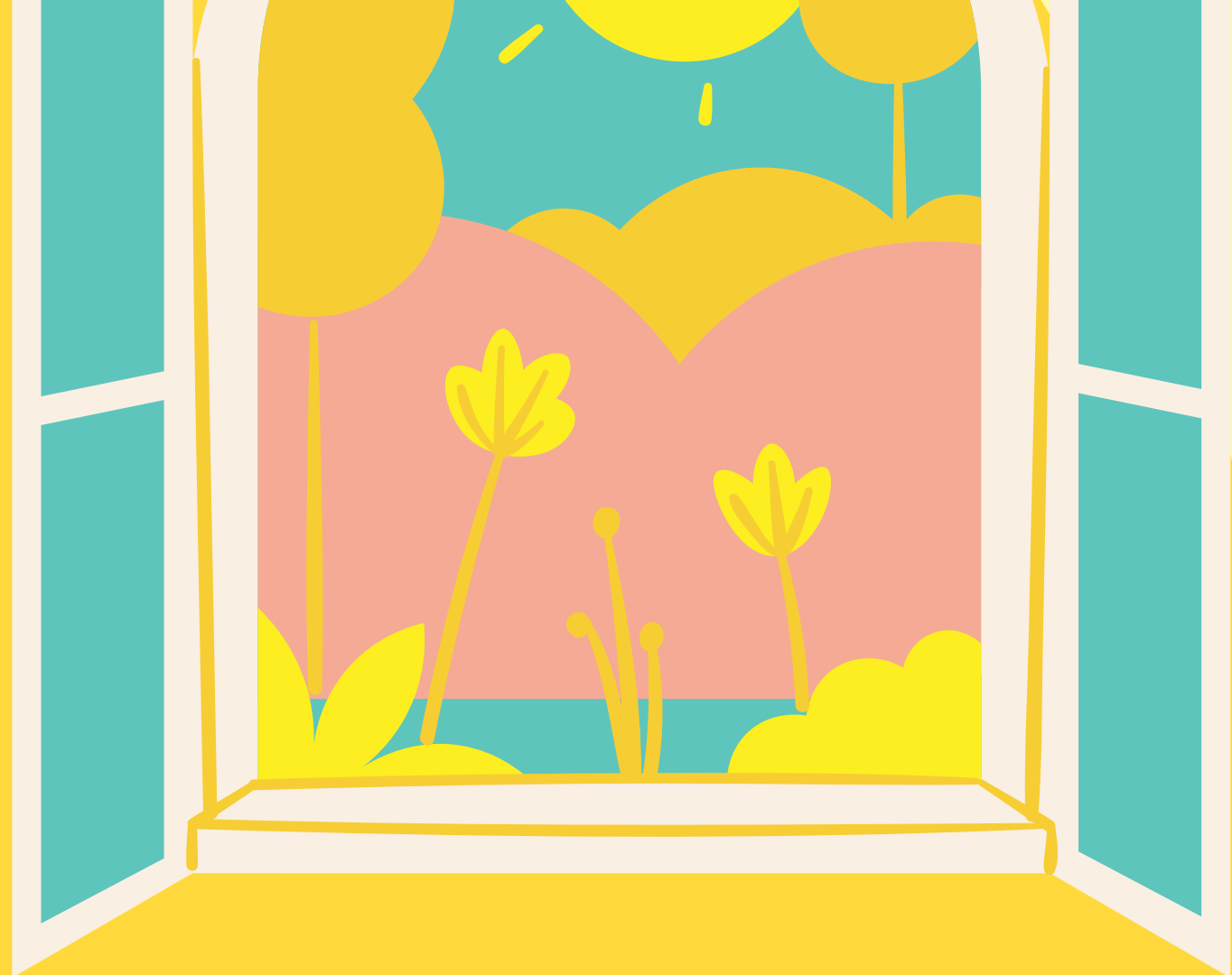
.....1

## Leadership

From serving on committees, to holding an officer position in your chapter or on the Panhellenic Executive Council, the leadership opportunities in the Panhellenic community are plentiful. In addition, being a member of UC Berkeley Greek life and Panhellenic leads you to many on- and off-campus opportunities, including research positions, employment offers, and learned organizations in which students can develop leadership and networking skills.

## Scholarship

Scholarship plays an important role in every part of Panhellenic life. Our chapters seek to provide women with the resources they need thrive academically, including compiled study materials, professional development workshops, and scholarship opportunities. The Panhellenic community further fosters scholarship by offering Study Hours to enhance educational experiences and encourage new connections within the community. The Panhellenic Cumulative GPA (average of 3.48 in Fall 2019) remains consistently higher than the all-Cal Cumulative GPA (3.38 in Fall 2019).



# CALGREEKS CORE VALUES

.....2

## Friendship

The time spent as a Panhellenic woman leads to lifelong bonds of sisterhood and friendship with members of your chapter and the women in the entire Panhellenic community. Friendship and social support are essential to thriving in a competitive school such as Cal; the Panhellenic community is filled with support ...?

## Service

Collectively, we have contributed thousands of hours and raised thousands of dollars to benefit over thirty different causes. Not only do sorority members donate their time to help their nationally-affiliated philanthropies and foundation but also to help our local community. A few community-wide examples include the Berkeley Project, tutoring Berkeley and Oakland youth, and hosting both our annual Trick-or-Greek event – in which we open our community to local elementary school children for Halloween activities and candy – and our Greek-wide clean-ups – in which members from each chapter help clean the streets of the city of Berkeley.



# LEADERSHIP

Within each chapter, there are leadership positions that are centered around philanthropy, sustainability, health and wellness, finances, judicial positions, and more!

Additionally, members can serve on the Panhellenic Executive Council to engage in larger community discussions and support all members regardless of their chapter affiliation.

.....

Each chapter has at least one philanthropy organization that they donate to through annual events. Chapters are also always developing new ways to give back to their community through working with other chapters to host joint events for causes important to them,

Collectively, the chapters raise thousands of dollars each year through meaningful contributions and events.



# SERVICE



# SCHOLARSHIP

We are dedicated to academic excellence, and provide a variety of resources to help members of our community thrive and exceed.

These include – but are not limited to – study buddies, compiled study materials, study tables, professional development workshops, professor dinners, and other events and activities to make for a collaborative and allied environment.

From recruitment and your first semester as a new member, to finding your big and later living in your chapter house, there are so many avenues that facilitate members to find their best friends and a variety of other connections.

There are also inter-sorority mixers and Panhellenic wide events (such as Giants Night, benefit concert, basketball games, and bbq's) that introduce you to members of the greater Greek life community.

# FRIENDSHIP



# **POTENTIAL NEW MEMBER'S BILL OF RIGHTS**

1. The right to be treated as an individual.
2. The right to be fully informed about the recruitment process.
3. The right to ask questions and receive true and objective answers from recruitment counselors and members.
4. The right to be treated with respect.
5. The right to be treated as a capable and mature person without being patronized.
6. The right to ask how and why and receive straight answers.
7. The right to have and express opinions to recruitment counselors.
8. The right to have inviolable confidentiality when sharing information with recruitment counselors.
9. The right to make informed choices without undue pressure from others.
10. The right to be fully informed about the NPC Unanimous Agreements implicit in the membership recruitment acceptance binding agreement (MRABA) signing process.
11. The right to make one's own choice and decision and accept full responsibility for the results of that decision.
12. The right to have a positive, safe, and enriching recruitment and new member experience.



# **POTENTIAL NEW MEMBER'S CODE OF CONDUCT**

**All Potential New Members are subject to removal from Fall Primary Recruitment if in violation of the following:**

- Unexcused absences of virtual recruitment parties and events.
- Disparaging chapters or fellow PNMs.
- Violating community development guidelines.
- Attending fraternity events.
- Being on sorority property.
- Displaying acts of disrespect towards active members, Panhellenic Executive Council, and Panhellenic Advisors.
- Don't record, photograph, or screenshot any element of a recruitment party.
- Only PNMs are allowed on the Zoom link / to attend in-person parties (no roommates, parents, friends, or siblings).
- Keep video on (except for Round 1 - Unity Day I & II) and stay engaged with chapters.
- Chapters will remove disruptive PNMs from a Zoom party by moving them to breakout room and contacting their recruitment counselor.



WHEN IS FALL  
PRIMARY  
RECRUITMENT?

MANDATORY  
INFO SESSION

AUG  
25TH

UNITY  
DAY 1

AUG  
26TH

UNITY  
DAY 2

AUG  
27TH

SISTERHOOD  
DAY

AUG  
28TH

SISTERHOOD  
DAY

AUG  
29TH

PHILANTHROPY  
DAY

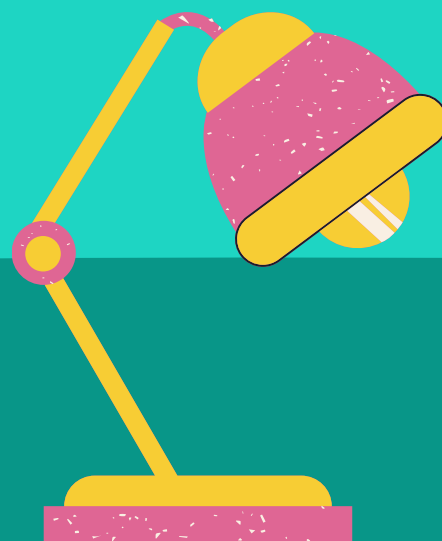
AUG  
30TH

PHILANTHROPY  
DAY

AUG  
31ST

PREFERENCE  
NIGHT

SEP  
1ST



# BREAKDOWN OF EVENTS:

## Round 1

### **MANDATORY INFO SESSION**

Wednesday, August 25th  
Check in: 6:25pm  
Event Timeline: 6:30-9:00pm

---

### **UNITY DAY 1**

Thursday, August 26th  
Check in: 5:00-6:00pm  
Event Timeline: 6-9:20pm

---

### **UNITY DAY 2**

Friday, August 27th  
Check in: 4:30-5:00pm  
Event Timeline: 5-9:00pm

---

## Round 2

### **SISTERHOOD DAY 1**

Saturday, August 28th  
Check in: 9:00-10:00am  
Event Timeline: 10am-3:00pm

---

### **SISTERHOOD DAY 2**

Sunday, August 29th  
Check in: 9:30-10:00am  
Event Timeline: 10am-2:30pm

---

## Round 3

### **PHILANTHROPY DAY 1**

Monday, August 30th  
Check in: 5:30-6:00pm  
Event Timeline: 6-9:00pm

---

## Round 4

## Bid Day!

### **PHILANTHROPY DAY 2**

Tuesday, August 31st  
Check in: 5:30-6:00pm  
Event Timeline: 6-9:00pm

---

### **PREFERENCE NIGHT**

Wednesday, September 1st  
Check in: 5:00-6:00pm  
Event Timeline: 6-10:30pm

---

### **BID DAY**

Thursday, September 2nd  
Check in: 6:00pm  
Event Timeline: 6:30-Midnight!

# WHAT TO EXPECT

## UNITY DAY

This is the first round of recruitment and takes 2 days. During this round, you will visit each of the participating 13 chapters.

## SISTERHOOD DAY

This is the second round of recruitment and takes 2 days. From this round forward, every PNM will have an individualized 'schedule' of chapters to which they will be invited. You can be invited to a maximum of 10 chapters on this day, and PNMs are required to attend all parties on their schedule.

## PHILANTHROPY DAY

This is the third round of recruitment and takes 2 days. You can be invited to a maximum of 6 chapters on this day, and PNMs are required to attend all parties on their schedule.

## PREFERENCE NIGHT

This is the final round of recruitment and takes 1 night. You can be invited to a maximum of 2 chapters on this day, and PNMs are required to attend all parties on their schedule.

## BID DAY!

PNMs are paired with a chapter and participate in whatever fun activities the chapter has organized for them in order to meet their new sisters!



# RECRUITMENT TIPS + THINGS TO KNOW PART 1



- Most PNMs are not invited to the maximum number of chapters each day, so do NOT be discouraged. While this is a mutually-selective process, there are other factors at hand (i.e., the Release Figure Method, discussed below) that affect which chapters you are invited back to. At the end of the day, keep an open mind, and remember that regardless of which chapter you end up in, you are a member of the entire Panhellenic community and will have a plethora of opportunities accessible because of your membership in our community!!
- The Release Figure Method (RFM) is the algorithm that UC Berkeley (and other schools!) use to (1) maximize the number of PNMs that join our community, (2) allow each PNM to match with a chapter for which she has a preference among the options available to her, and (3) enable each chapter to meet "quota". In more basic terms, the RFM works to maximize your preferences, chapters' preferences, and the number of people who enter our community.

# RECRUITMENT TIPS + THINGS TO KNOW PART 2



- Because of the way the RFM works, no chapter can truthfully promise you a bid, as they are ultimately not in charge of who matriculates the following day (the algorithm – RFM – does!).
- Utilize your Recruitment Counselors, the VP Membership, and Head Recruitment Counselor for questions! We are all here to support you through this process and ensure that it is as successful for you as possible.
- Have an intention in mind when entering this process. What do you want from the chapter? What do you want from your experience at Cal? Asking active members pointed questions about their experience and for help navigating this process will help you find a chapter that best fits your interests and needs!



On the final night of recruitment, as you make your final selections, you will sign a copy of the Membership Recruitment Acceptance Binding Agreement (MRABA). This agreement outlines your rights in the process, along with the conditions that apply.

**MRABA**

## **WHAT DO YOU NEED TO KNOW ABOUT THE MRABA?**

1. Signing the MRABA means that you are willing to accept a bid to either organization that you visited on Preference night.
2. You don't have to rank all the chapters that you attended, but we encourage you to maximize or list both options available to you, as it gives you a higher chance of receiving a bid. Once the agreement is submitted, it is final and cannot be changed.
3. If you do not get a bid from a chapter, or you chose to withdraw from the process before signing the MRABA, you will be eligible to participate in Continuous Open Bidding (COB), also known as informal recruitment. If you receive a bid and chose to decline it, you will not be eligible to join any Panhellenic organization for a full calendar year.



# FAQ'S



## WHAT IS THE TIME COMMITMENT OF BEING IN A SORORITY?

You get what you put in!! Most chapters will be around 2-4 hours a week with minimal effort for new members (New member meetings, Monday Night Meetings, Philanthropy events, etc.), but if you choose to take on a position in your chapter, the range can be much greater. Almost all members of our Berkeley Panhellenic community are very involved in their academics and additional extra-curriculars; even with leadership positions, being involved in a chapter is no barrier to outside involvement!

## HOW DO I KNOW WHICH CHAPTER TO JOIN?

The Panhellenic recruitment structure is created so you are able to meet people from every chapter and get a glimpse of how you may fit into a chapter. While ultimately the decision is only one you can make for yourself, there are many resources to help make the process and decisions a bit easier. Recruitment Counselors will support you through the decision-making process and are trained to help both with the college transition and recruitment process. If you are torn about what chapter to join, reach out to your Recruitment Guide or anyone on the Panhellenic Council and have them process with you.

## WHEN CAN I LIVE IN?

Each chapter has their own housing policies. We encourage you to ask them about this on Sisterhood day!

# FAQ'S



## **DOES EVERY SORORITY HAVE A HOUSE?**

At Berkeley, every chapter has a house that members have access to.

## **DO I HAVE TO ATTEND ALL OF THE RECRUITMENT EVENTS THAT I AM INVITED TO?**

Yes, you do. We want to make sure that each new member is given the opportunity to spend as much time with the organizations that they are interested in and those that are interested in them.

## **SOMEONE TOLD ME I'M GUARANTEED A BID, SHOULD I BELIEVE THEM?**

No. One individual member cannot guarantee that any individual will be able to join any organization. Sorority members are not allowed to promise membership to any potential new member. If a member tells you that you are “guaranteed” to be in their organization, let your Recruitment Counselor or a PHC council member know, and it will be handled accordingly.

## **WHERE ARE SOME QUIET PLACES TO DO RECRUITMENT?**

Any place that's quiet and offers you enough space to have a conversation! Chapters will be understanding of the fact that you might be sharing a room / space with people around you; do your best to focus on the conversations! You've got this!!

# FAQ'S



## **WHAT IF I HAVE A CONFLICT DURING ONE OF THE PARTIES / DAYS?**

That's okay! Fill out the conflict form that is emailed to you after you register. If any further issues come up, please let your Recruitment Counselor know.

However, missing full days / several parties\* of recruitment may affect your ability to make meaningful connections with Active Members and therefore your ability to judge which parties you would like to attend the following round. You will have to rank all chapters, even if you do not attend the parties. Do what you can to attend as many parties as possible, but ACADEMICS comes first!

Alex & Caroline's pro tip: do your best to go to every party and talk with your Recruitment Counselor every day (or us!) if you have any concerns.

\*If you are found to be missing parties without a reasonable excuse, you may be in violation of the PNM Code of Conduct and dropped from the process. Do NOT abuse the system!

## **HOW DO I KNOW WHICH PARTIES TO ATTEND / THEIR ZOOM LINKS?**

After you create your ICS account, and you get your full schedule (after Orientation), you will be able to see the Zoom links for the parties that you have on your schedule. If you run into any technical errors, let your Recruitment Counselor know, or Alex/Caroline. After each round of Recruitment (Unity Day II, Sisterhood Day II, Philo Day II, Preference), you will log into ICS and rank each chapter in order of which you prefer to attend the following round. On Preference, you will attend a maximum of 2 parties, and on Bid day you will get a bid from a maximum of 1 chapter.

# FINANCIAL INFORMATION



## Financial Responsibilities

Dues are the fees and expenses that all sorority members are required to pay. PNMs are encouraged to get a more comprehensive view of specific chapter obligations by asking questions when visiting chapters during the recruitment process.

## New Member Membership Fees

During your first year of membership, the dues and fees you pay include several one-time fees and expenses. Your dues support chapter activities such as social events and meals at the house.

## Active Member Membership Fees

Active Member Membership Fees are the dues that every sorority member is required to pay. Fees vary between members that live in and live out of the chapter house. These dues support facilities, chapter meals, social events, and more.



# FINANCIAL INFORMATION SUMMARY



## LOWS:

First Year New Member Fees: \$2,654

Live Out Fees: \$2,472

Live in Fees: \$9,994

## HIGHS:

First Year New Member Fees: \$4,076

Live Out Fees: \$3,708

Live in Fees: \$14,854

## AVERAGES:

First Year New Member Fees: \$3,447

Live Out Fees: \$3,151

Live in Fees: \$12,863

# CHAPTER SPECIFIC DUES

## ALPHA CHI OMEGA

First Year New Member Fees: \$3,512

Live Out Fees: \$3,140

Live in Fees: \$9,994

## ALPHA DELTA PI

First Year New Member Fees: \$3,102

Live Out Fees: \$2,982

Live in Fees: \$13,186

## ALPHA PHI

First Year New Member Fees: tbd

Live Out Fees: \$3,324

Live in Fees: \$13,761.49

## CHI OMEGA

First Year New Member Fees: \$3,930

Live Out Fees: \$3,085

Live in Fees: \$13,285

## DELTA DELTA DELTA

First Year New Member Fees: \$3,796

Live Out Fees: \$2,720

Live in Fees: \$12,980

## DELTA GAMMA

First Year New Member Fees: \$2,654

Live Out Fees: \$2,472

Live in Fees: \$10,082



# CHAPTER SPECIFIC DUES

## **DELTA SIGMA**

First Year New Member Fees: \$2,670  
Live Out Fees: \$2,770  
Live in Fees: \$13,304

## **GAMMA PHI BETA**

First Year New Member Fees: \$2,770  
Live Out Fees: \$3,550  
Live in Fees: \$13,250

## **KAPPA ALPHA THETA**

First Year New Member Fees: \$3,825  
Live Out Fees: \$3,600  
Live in Fees: \$13,000

## **KAPPA KAPPA GAMMA**

First Year New Member Fees: \$3,870  
Live Out Fees: \$3,375  
Live in Fees: \$13,372

## **PI BETA PHI**

First Year New Member Fees: \$4,076  
Live Out Fees: \$3,642  
Live in Fees: \$13,052

## **SIGMA KAPPA**

First Year New Member Fees: \$3,237  
Live Out Fees: \$2,600  
Live in Fees: \$13,100

## **ZETA TAU ALPHA**

First Year New Member Fees: \$3,926  
Live Out Fees: \$3,708  
Live in Fees: \$14,854

## **WHAT ARE THEY?**

Letters of Recommendation are letters from alumni or current members of a chapter on behalf of a Potential New Member to highlight a PNM's accomplishments and experiences to demonstrate that she/they will uphold the sorority values and expectations of membership.

They are specific to a chapter; in other words, an alumni who was affiliated with one chapter (i.e., ABC) cannot write a letter of recommendation for the PNM to a different chapter (i.e., DEF)

## **ARE THEY MANDATORY?**

No! Letters of Recommendation are not required for participation in recruitment, and often carry very little weight in the chapter to which a PNM ultimately matriculates.

# **LETTERS OF RECOMMENDATION**



## **HOW DO I GET THEM?**

Often times, PNMs will procure a recommendation letter from a family member, family friend, or acquaintance. However, if you do not know anyone who belonged to a sorority, do not worry about procuring one, Again, it does NOT affect the end result.

## **WHEN ARE THEY DUE?**

They are due before the start of Fall Primary Recruitment (August 25th).



WHERE DO I SEND THEM?

## **ALPHA CHI OMEGA**

tbd

## **ALPHA DELTA PI**

[alphadeltapi.org](http://alphadeltapi.org) submitted until 8/25

## **ALPHA PHI**

2830 Bancroft Steps, Berkeley, CA 94704 before recruitment begins (8/25 deadline)

## **CHI OMEGA**

<https://chiomega.com/recommend-a-woman-for-recruitment/> by Chi Omega Alumnae

## **DELTA DELTA DELTA**

tbd

## **DELTA GAMMA**

[www.deltagamma.org](http://www.deltagamma.org) submitted until 8/25

## **DELTA SIGMA**

Email to [sigma.membershiprecruitment@gmail.com](mailto:sigma.membershiprecruitment@gmail.com) by August 19th



WHERE DO I SEND THEM?

## **GAMMA PHI BETA**

tbd

## **KAPPA ALPHA THETA**

Due the day before Recruitment Orientation. Alumni or current members can email them to our Chief Recruiting Officer at [omegathetacro@gmail.com](mailto:omegathetacro@gmail.com)

## **KAPPA KAPPA GAMMA**

[calkapparecruitment@gmail.com](mailto:calkapparecruitment@gmail.com)

## **PI BETA PHI**

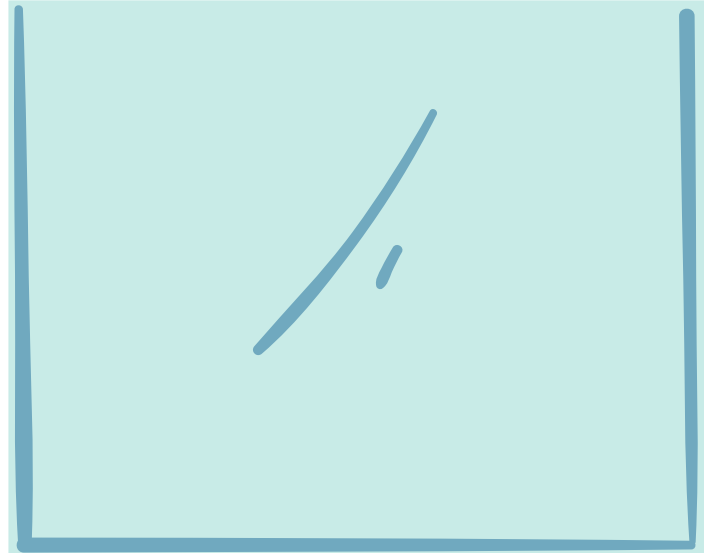
tbd

## **SIGMA KAPPA**

Sigma Kappa does not follow a legacy policy.

## **ZETA TAU ALPHA**

tbd



Some chapters do require that you live in for at least one year **after** your first year as a member. Generally, living in is not required your first year upon joining for any sorority.

Most chapters – beyond those with "checks" – have a policy requiring members to live in until the home is at capacity.

# LIVE-IN REQUIREMENTS

- ALPHA CHI OMEGA
- ALPHA DELTA PI
- ALPHA PHI
- CHI OMEGA
- DELTA DELTA DELTA
- DELTA GAMMA
- DELTA SIGMA
- GAMMA PHI BETA
- KAPPA ALPHA THETA
- KAPPA KAPPA GAMMA
- PI BETA PHI
- SIGMA KAPPA
- ZETA TAU ALPHA

REQUIRED?	NOTES:
<input type="checkbox"/>	
<input checked="" type="checkbox"/>	one year
<input type="checkbox"/>	
<input checked="" type="checkbox"/>	two semesters
<input checked="" type="checkbox"/>	tbd
<input type="checkbox"/>	
<input type="checkbox"/>	
<input type="checkbox"/>	
<input type="checkbox"/>	
<input type="checkbox"/>	
<input type="checkbox"/>	
<input checked="" type="checkbox"/>	two years



# SCHOLARSHIP INFORMATION

There are more scholarship resources offered from each individually chapter. More information at [calphc.com/academics](http://calphc.com/academics)

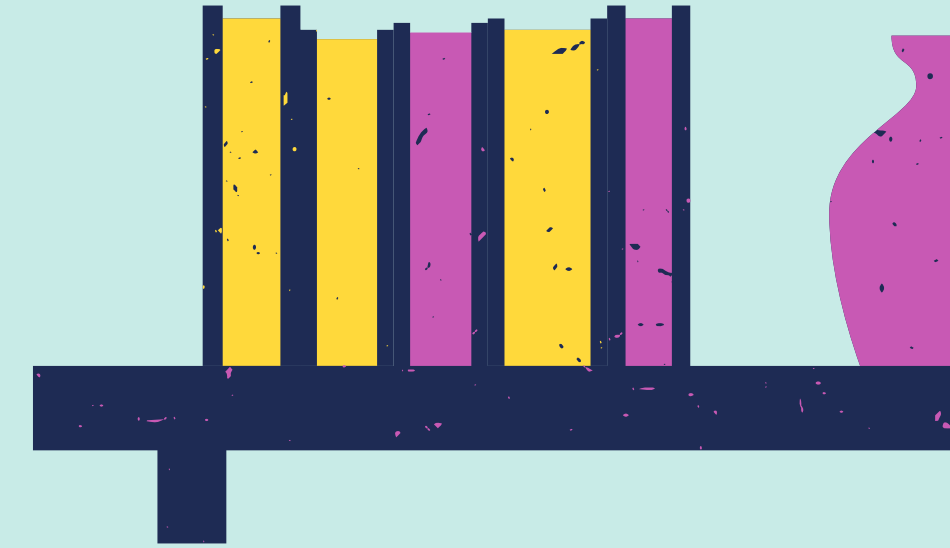
## PANHELLENIC SCHOLARSHIP

The application opens in October, and entails a first round application and second round interview. Multiple people are awarded this scholarship with different amounts given to each recipient depending on their application/interview. More information to come in the Fall!

## NEW MEMBER SCHOLARSHIP

The New Member Scholarship is funded by any left over money from recruitment, which varies each year, so it is difficult to know exactly how much money will be allocated. Each chapter nominates 2 new members who have recently joined their chapter and would benefit financially from this scholarship.

## NEED-BASED SCHOLARSHIP IN THE WORKS...

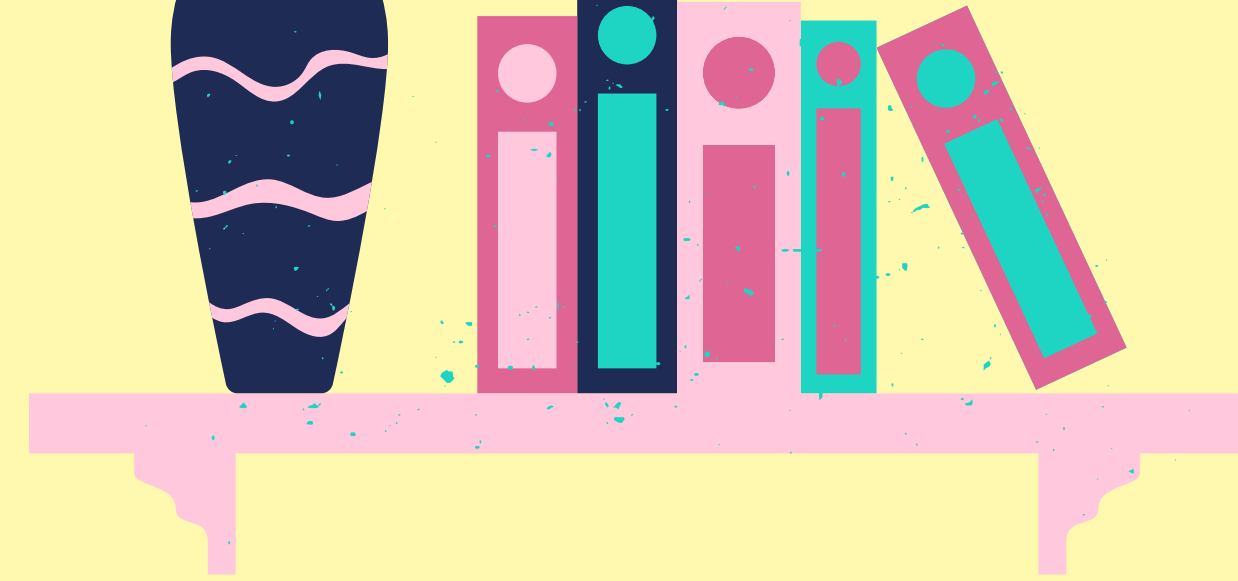


# FINDING A BALANCE

It can be difficult to manage academic responsibilities in addition to other commitments and activities you would like to participate in. It is important to always remember that you are a student first, and that academics take priority over other activities (including your involvement in Panhellenic!).

However, many people find that – by joining Greek life – managing other commitments become a bit easier as they develop a network of close resources who can aid them in their college process through support and shared experiences.

Women in the Panhellenic community understand that there are many different opportunities at cal to discover; the Panhellenic community supports one another in many different pursuits – be it academics or otherwise – and therefore is worth the investment.



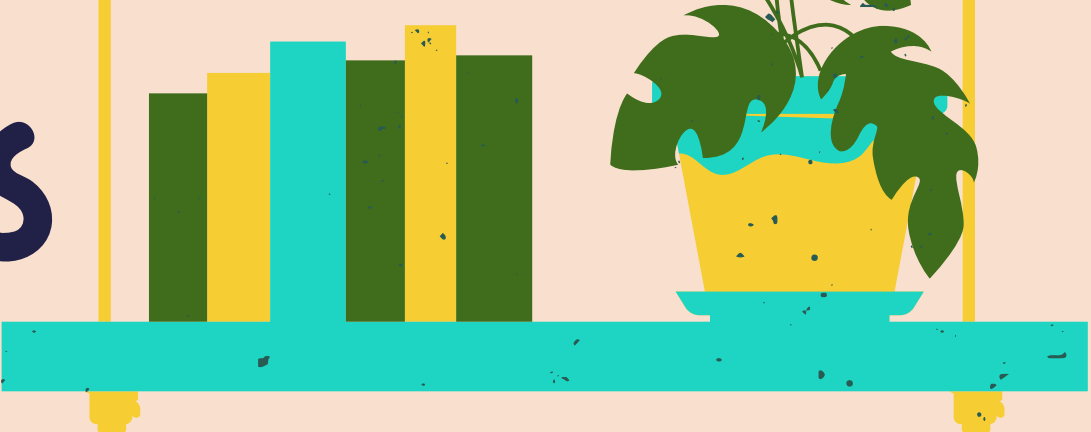
# PRONOUNCING GREEK LETTERS AND THE ALPHABET



Upper Case Letter	Lower Case Letter	Greek Letter Name	English Equivalent
A	α	Alpha	a
B	β	Beta	b
Γ	γ	Gamma	g
Δ	δ	Delta	d
E	ε	Epsilon	e
Z	ζ	Zeta	z

H	η	Eta	h
Θ	θ	Theta	th
I	ι	Iota	i
K	κ	Kappa	k
Λ	λ	Lambda	l

# PRONOUNCING GREEK LETTERS AND THE ALPHABET



Upper Case Letter	Lower Case Letter	Greek Letter Name	English Equivalent
M	μ	Mu	m
N	ν	Nu	n
Ξ	ξ	Xi	x
Ο	ο	Omicron	o
Π	π	Pi	p

Ρ	ρ	Rho	r
Σ	σ,ς*	Sigma	s
Τ	τ	Tau	t
Υ	υ	Upsilon	u
Φ	φ	Phi	ph
Χ	χ	Chi	ch
Ψ	ψ	Psi	ps
Ω	ω	Omega	o

# ALPHA CHI OMEGA

"AL-FUH KAI OH-MEG-UH"

## Nickname

Alpha Chi, A Chi O

## Address

2313 Warring Street

## Symbol

Lyre

## Colors

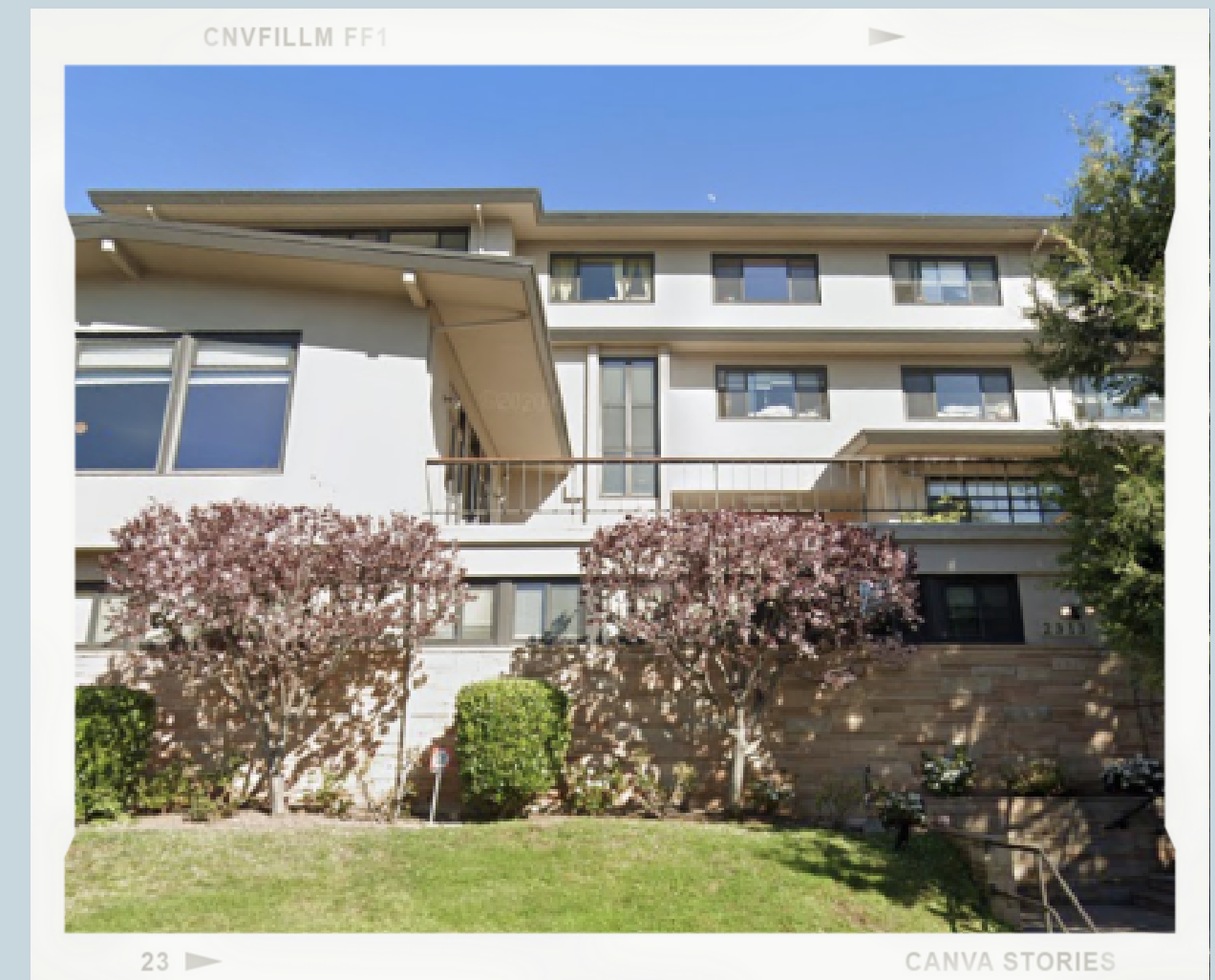
Carnation red and Olive Green

## Year Founded at Cal

Pi Chapter, 1909

## Philanthropy

Ruby's Place





# ALPHA DELTA PI

"AL-FUH DEL-TUH PIE"

## Nickname

ADPi

## Address

2400 Piedmont Avenue

## Symbol

Diamond and Lion

## Colors

Azure blue and white

## Year Founded at Cal

Psi Chapter, 1913

## Philanthropy

Ronald McDonald House



# ALPHA PHI

"AL-FUH FEE"

## Nickname

APhi

## Address

2830 Bancroft Steps

## Symbol

Ivy Leaf

## Colors

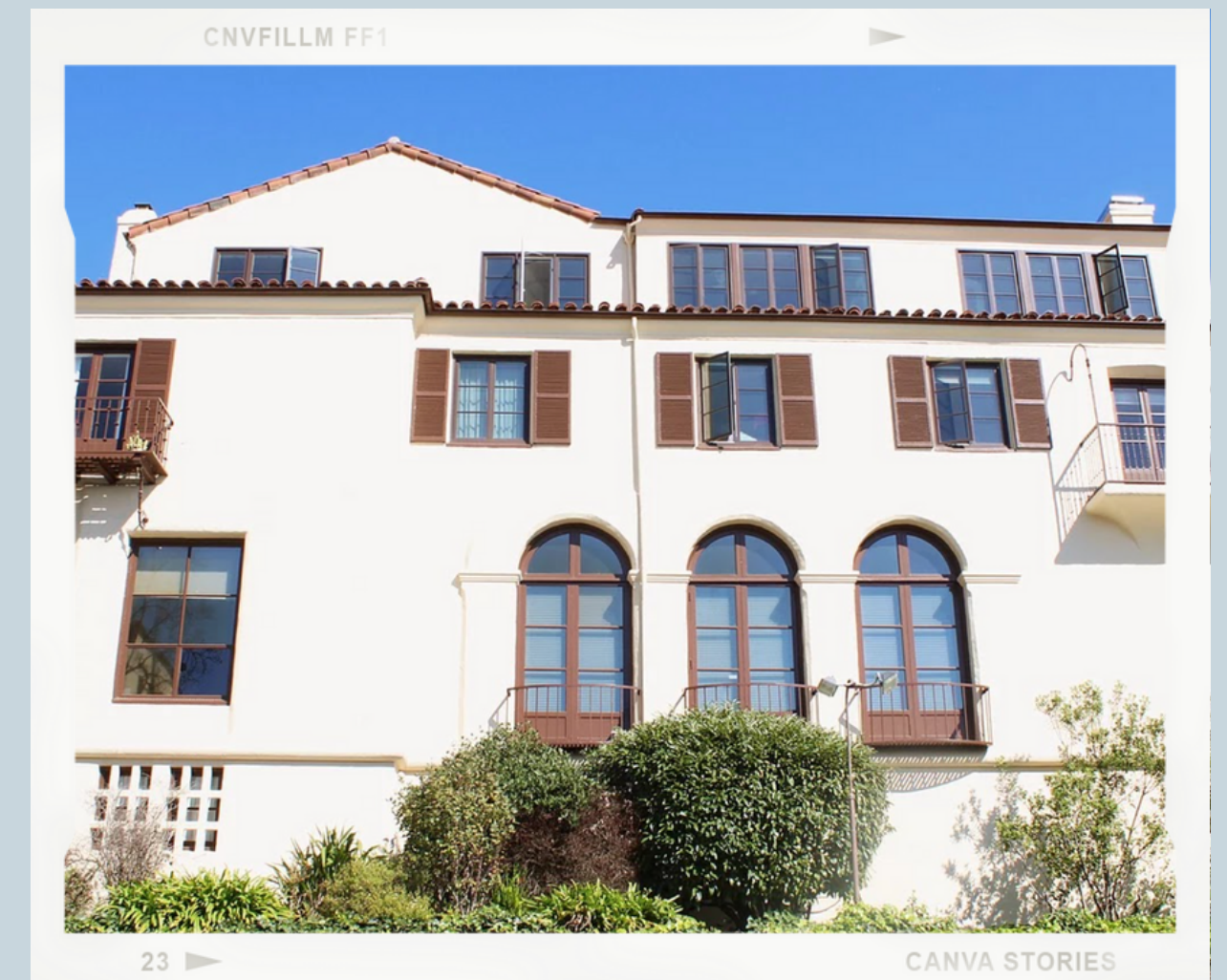
Silver and Bordeaux

## Year Founded at Cal

Lambda Chapter, 1901

## Philanthropy

The Alpha Phi Foundation



# CHI OMEGA

"KAI OH-MEG-UH"

## Nickname

Chi O

## Address

2421 Piedmont Avenue

## Symbol

Owl, Skull, & Crossbones

## Colors

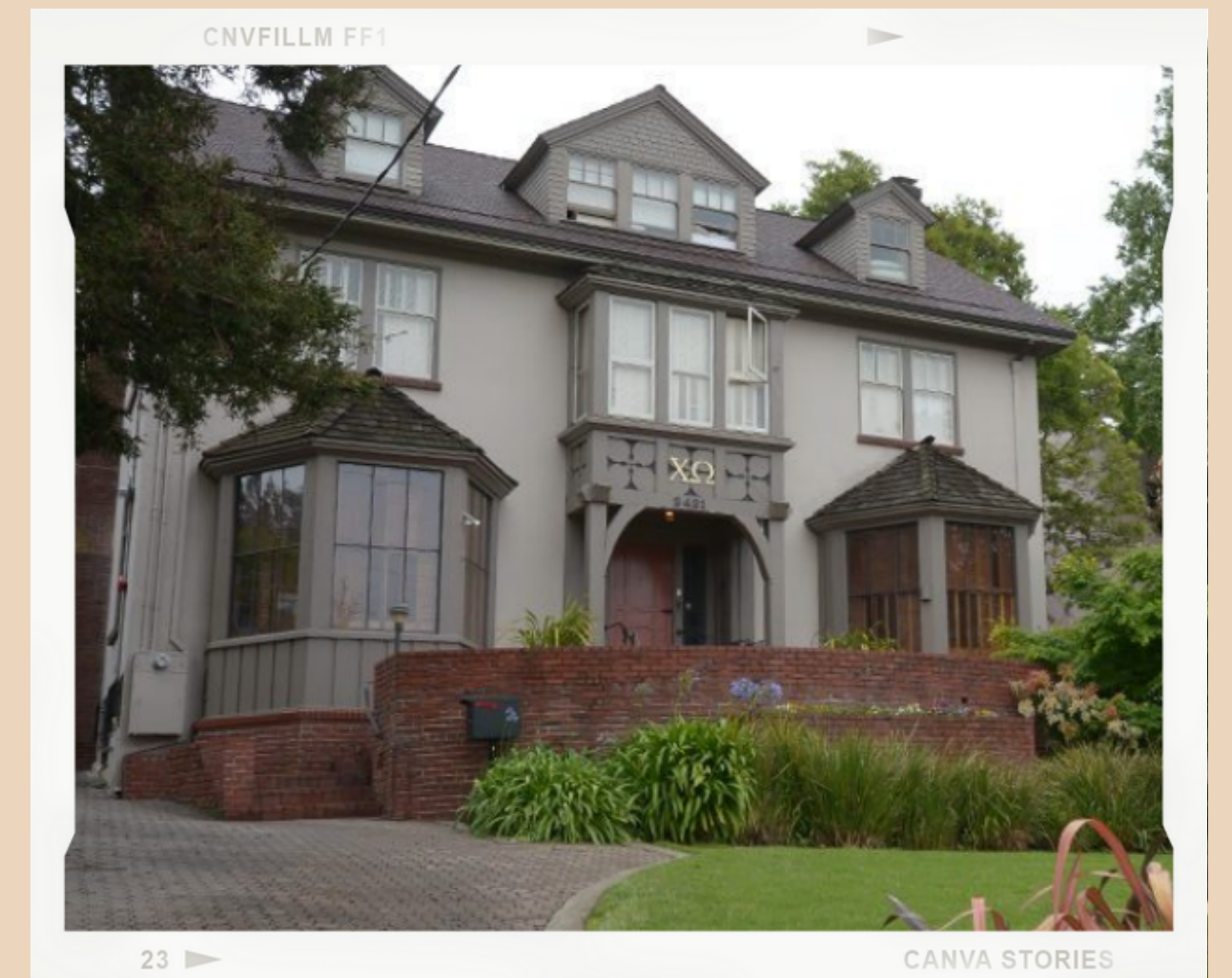
Cardinal and Straw

## Year Founded at Cal

Mu Chapter, 1902

## Philanthropy

Make-a-Wish



# DELTA DELTA DELTA

"DEL-TUH DEL-TUH DEL-TUH"

## Nickname

TriDelta

## Address

2300 Warring Street

## Symbol

Pearl, Pine, and Pansy

## Colors

Silver, Gold, and Cerulean Blue

## Year Founded at Cal

Pi Chapter, 1900

## Philanthropy

St. Jude Children's Research  
Hospital





# DELTA GAMMA

"DEL-TUH GAMM-UH"

## Nickname

DG

## Address

2710 Channing Way

## Symbol

Anchor

## Colors

Bronze, Pink, Blue

## Year Founded at Cal

Gamma Chapter, 1907

## Philanthropy

Service for Sight





# DELTA SIGMA

"DEL-TUH SIGMA"

## Nickname

DS

## Address

2311 Prospect Street

## Symbol

Compass

## Colors

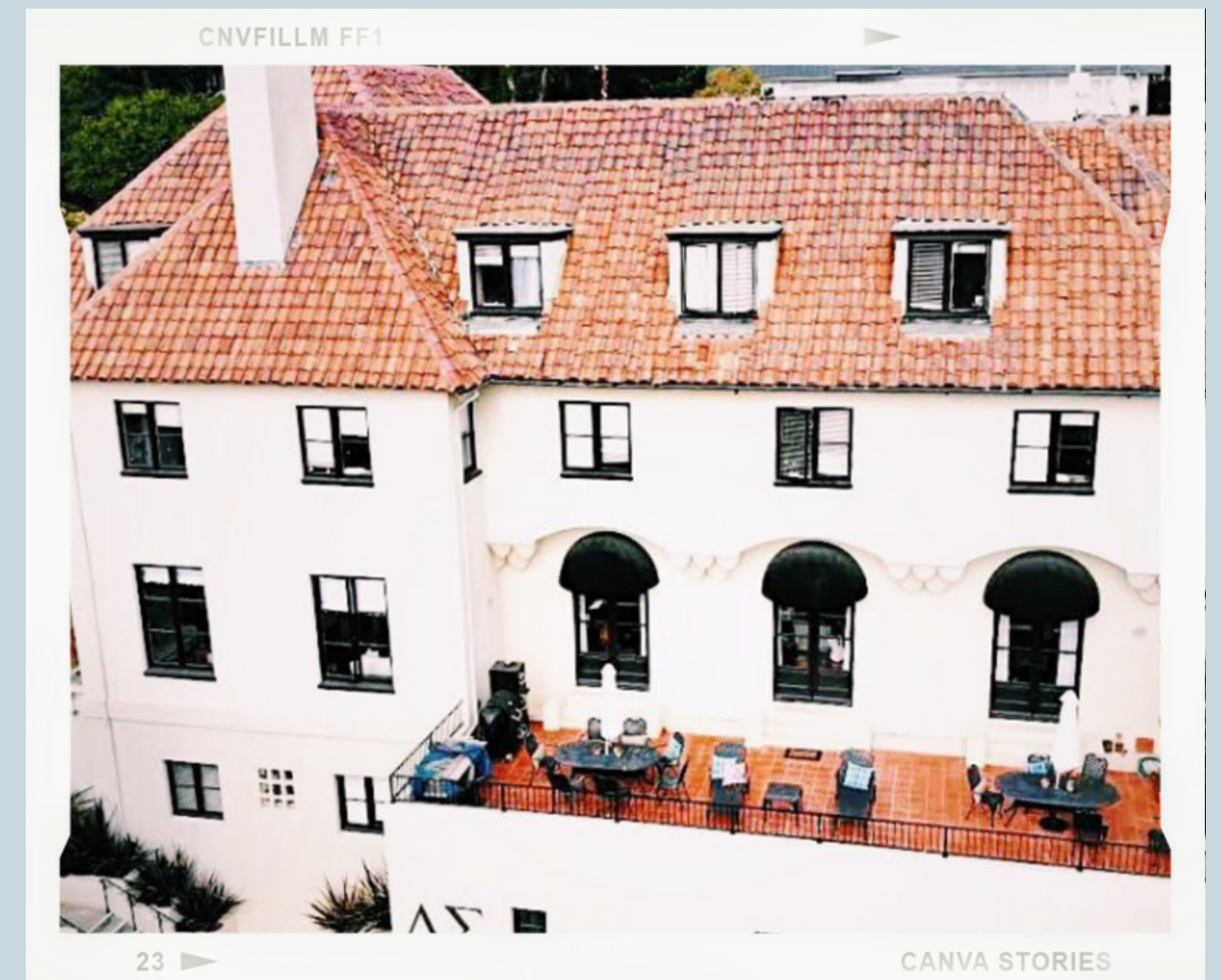
Forest Green

## Year Founded at Cal

Alpha Chapter, 2017

## Philanthropy

MISSEY



# GAMMA PHI BETA

"GAMMA-UH FAI BAY-TUH"

## Nickname

Gamma Phi, G Phi

## Address

2723 Channing Way

## Symbol

Crescent, Pink Carnation

## Colors

Light and Dark Brown (Brown and Mode)

## Year Founded at Cal

Eta Chapter, 1894

## Philanthropy

Building Strong Girls



# KAPPA ALPHA THETA

"KAP-UH AL-FUH THAY-TUH"

## Nickname

Theta

## Address

2723 Durant Avenue

## Symbol

Kite, Pansy, Twin Stars

## Colors

Black, Gold

## Year Founded at Cal

Omega Chapter, 1890

## Philanthropy

C.A.S.A. (Court Appointed  
Special Advocates)



# KAPPA KAPPA GAMMA

"KAP-UH KAP-UH GAM-UH"

## Nickname

Kappa

## Address

2838 Piedmont Avenue

## Symbol

Owl, Key, Fleur de Lis

## Colors

Dark Blue, Light Blue

## Year Founded at Cal

Pi Deuteron Chapter, 1880

## Philanthropy

Jog for Jill, Reading is Fundamental, and Girls Academy





# PI BETA PHI

"PIE BAY-TUH FIE"

## Nickname

Pi Phi

## Address

2325 Piedmont Avenue

## Symbol

Arrow

## Colors

Wine, Silver Blue

## Year Founded at Cal

Beta Chapter, 1900

## Philanthropy

Read > Lead > Achieve





# SIGMA KAPPA

"SIG-MUH KAP-UH"

## Nickname

SK

## Address

2409 Warring Street

## Symbol

Dove, Heart

## Colors

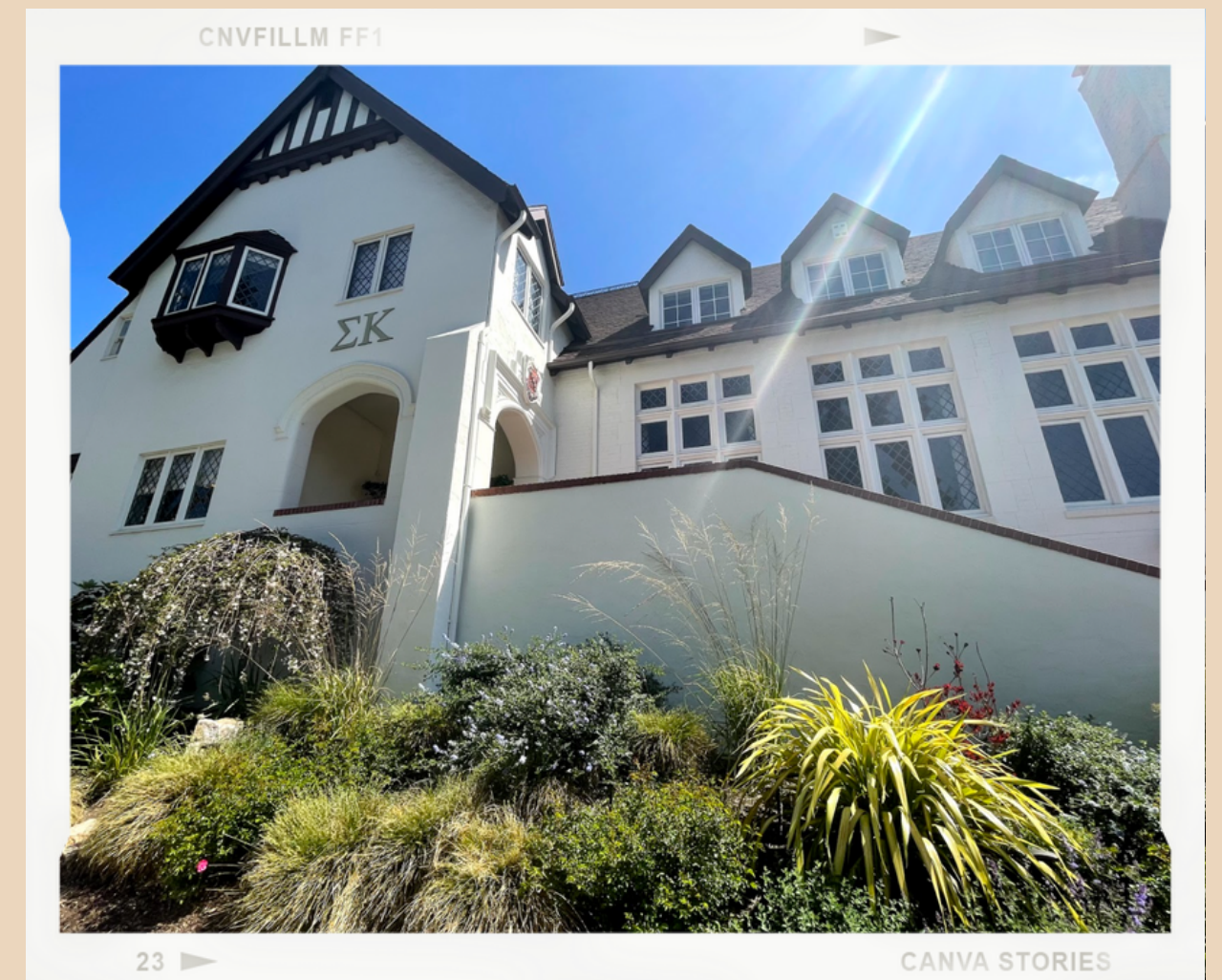
Maroon, Lavender

## Year Founded at Cal

Lambda Chapter, 1910

## Philanthropy

Alzheimer's Association



# ZETA TAU ALPHA

"ZAY-TUH T-OW AL-FUH"

## Nickname

Zeta

## Address

2401 Piedmont Avenue

## Symbol

Five-pointed crown, Strawberry, White  
Violet

## Colors

Turquoise Blue, Steel Grey

## Year Founded at Cal

Upsilon Chapter, 1915

## Philanthropy

Breast Cancer Education  
& Awareness



# OTHER COUNCILS

Panhellenic sororities belong to 1 of 4 councils that make up the larger CalGreeks community. Below we've included information about the other 3 councils that offer membership opportunities to interested students.

## MULTICULTURAL GREEK COUNCIL

The Multi-Cultural Greek Council (MCGC) is comprised of cultural and identity based organizations who promote and uplift common heritages and/or shared identities to historically marginalized communities. Currently, there are 15 chapters that are a part of this council, with a mix of both sororities and fraternities.

## INTER-FRATERNITY COUNCIL

The Inter-Fraternity Council (IFC) community is comprised of 30+ fraternities. The council is made up of 11 elected fraternity members who work to advance and improve the fraternal experience.

## NATIONAL PAN-HELLENIC COUNCIL

The National Pan-Hellenic Council (NPHC) is the umbrella organization for the 9 historically African American fraternities and sororities. This council works together to promote unity, share ideas, and discuss common goals to advance their members and community. Here at Cal, there are currently 5 NPHC chapters (AlphaPhi Alpha Fraternity, Inc.; Kappa Alpha Psi Fraternity, Inc.; Alpha Kappa Alpha Sorority, Inc.; Delta Sigma Theta Sorority, Inc.; and Sigma Gamma Rho, Sorority Inc.)



**LEARN MORE AT:**

<https://lead.berkeley.edu/find-a-chapter/>





Alexandria Marx

Vice President of Membership  
phc.membership@calgreeks.com  
805-570-3344

# CONTACT US

best ways to reach us with  
questions, concerns, etc.!

Caroline Dority

Head Recruitment Counselor  
phc.hrc@calgreeks.com  
805-551-7364



follow us on social media!



@CALPHC



UC BERKELEY  
PANHELLENIC



BELLA VILLEGAS -  
PHC VP OF  
COMMUNICATIONS